



Renders & Finishes

Unitex®

BUILD YOUR DREAM

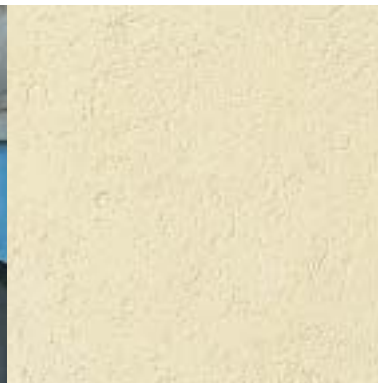
Unitex Renders & Finishes

With Unitex® renders and finishes you can easily build your dream. Unitex products range from, lightweight pre-mixed dry powder-based renders to, ready-to-use water-based acrylic finishes matched to light-fast colours and various effects.

Every product has proven technological advances in polymer modifications and functional additives. All Unitex renders and finishes have high impact strength combined with excellent adherence to well bound surfaces. Some are formulated to specific substrate requirements. And all are easy to apply by spray, trowel or roller. Many of the renders utilise recycled materials that enhance the benefits but don't compromise the performance.

With such a broad spectrum of solutions available, the most difficult choice is 'which product to use?' To assist you in this task, see the selection guide on the back page. Match the substrate you have and the finish you desire with the appropriate Unitex product.

For more assistance, simply provide the details of your project to Unitex or request a visit by a technical representative on-site. Unitex will then work with you and your applicator to provide the Uni-Cote base render and the Uni-Décor colour and texture you need to build your dream.



Unitex Base Render Products

General Information

To fully protect your wall and to provide the strong key for your topcoat, a solid base is needed. Unitex renders are designed to provide permanent adherence to the substrate and a sound key-surface for the finish coat, that is later applied over the base render.

Base renders are not designed to be the finished surface. They should always be over-coated with a finish coat from the Unitex Applied Finish range. All of our Renders are compatible with all of our Finishes.

It should be noted that renders are not designed to have cohesive strength greater than the substrate. The full strength of renders is achieved after complete through drying and final cement hydration. This can take up to 30 days.

Safe Use

Protective glasses, gloves, dust masks etc should be used where appropriate when handling Unitex products. Hearing protection should be worn when using power tools. Details are provided in the relevant product Material Safety Data Sheet (MSDS) available from Unitex.

Condition of Substrate

Before application of any render the surface of the substrate must be clean, dry and free of any debris. This means that any loose or damaged substrate must be removed or patched and made good, prior to application of the base render.

The substrate surface must be cleaned free of any grease, oils, scaling laitance, efflorescence, form-oil compounds, mould, fungi, rust, dirt, dust or any other foreign matter. Pre-painted surfaces must be wire-brushed back to the bare substrate.

It is the responsibility of the builder or head contractor to make good any substrate before the render is applied.

Adequate expansion joints are required to minimise cracking on the surface of the render. Location of the expansion joints is also the responsibility of the builder or head contractor. Unitex recommends expansion joints to every elevation and between different substrates, to allow for building movements and/or stresses.

If such expansion joints are not provided by the builder or head contractor, cracking may occur due to movement of the substrate. This is in no way indicative of faulty material, rather it indicates sub-standard building practice.

Adding Water

The majority of Unitex base render products are dry powder-based products. This means that you are getting a 100% active product. All that is required is for clean water to be mixed in, on-site, immediately prior to application to the substrate.

The recommended starting point is to add approximately 4 -5 litres of water (per full bag of render) into a clean container. Then slowly add the powder, with drill mixing until the desired slump (consistency) is achieved.

The exact amount of water added depends on a number of factors unique to each application. These factors include the condition of the substrate, the ambient temperature and the surface temperature, amongst others. The applicator needs to take all relevant factors into account when determining the slump (of the wet render) required.

Packaging

All Unitex dry powder render products are supplied in strong, multi-walled paper sacks that are readily disposed of in recycle bins, after the contents have been emptied. They are packed 60 bags to a pallet.

HiLITE RENDER™ (High build, lightweight)

This lightweight render is the most versatile product from the Unitex base render range. HiLITE RENDER is a cement-based, pre-mixed, polymer-modified dry powder product requiring only water to be added on-site. It is approximately half the weight of conventional renders.

It is designed for application on new substrates and in renovation works. This versatility is also reflected over the wide range of substrates on which it can be used. HiLITE RENDER can successfully be applied to brick, concrete, pre-cast panels, lightweight porous panels and cement blocks.

HiLITE RENDER is equally at home on internal surfaces. After it has cured the surface can be covered with hard plaster, tiles or a textured paint.

It can be used for filling, patching, levelling and the restoration of substrates. HiLITE RENDER reduces shrinkage cracking of the surface finish, as its inherent flexibility enables it to absorb shrinkage of the surface as it dries.

The application versatility of HiLITE RENDER is matched by its performance over time after application. The results are excellent durability and strong impact resistance which will help protect the substrate and maintain the integrity of the finished product.

HiLITE RENDER can be applied by either trowel or spray machine. It can be used in either a one or two-pass application. Even on a single pass it is possible to obtain a coating thickness of up to 30 mm. Up to 50 mm thickness is readily achieved with a three-pass application. A minimum of 24-hours drying time is required between the applications.

Before applying a finish coat from the Unitex range you must wait a minimum of 72 hours to ensure the HiLITERENDER surface is dry.



HiFIBRE RENDER™ (High build, fibre reinforced)

This product in the base render range is specifically designed to be applied over the Uni-IB Board (a fire-retardant EPS sheet with minimum bead fusion of 50%) in the Uni-TWS system.

HiFIBRE RENDER is also a polymer-modified, lightweight render. It has additional reinforcing characteristics gained by homogeneous incorporation of surface-treated synthetic fibres into the blend. This enhances the impact resistance of the surface.

As indicated, this formulated render has excellent adhesion to Expanded Polystyrene foam sheets. This makes it the ideal base render to apply to the Uni-IB Board component of the unique Uni-TWS thermal insulating wall system by Unitex. (Refer to the Uni-TWS brochure for more details on this innovative insulation product).

HiFIBRE RENDER can be machine-sprayed or hand-trowel applied. Due to its inherent strength no more than 10 mm thickness is required. This level is accurately achieved by use of the Uni-TWS Corner, Edge and Window Sill Reveals or Edge and Sill Blocks (patents pending), and using a straight edge, in the Uni-TWS application.

The 10 mm thickness is readily achieved in one pass, particularly with machine-spray application. Even with hand-trowel application, this thickness is quite easily accomplished by skilled applicators. However even if two passes are required the performance of the base render is not compromised. To ensure a strong inter-layer bond is obtained, wait 24-hours between coats.

Any product from the Unitex finish range can be applied over the top of the HiFIBRE RENDER.

REDI RENDER™

This polymer-modified, heavier weight render is available in two grades: Medium or Fine. Both products provide the same high-quality, strong and durable base render.

These products are specifically designed to be applied over new or old brickwork. They are trowel-applied and suitable for a one-coat or two-coat application. A 24-hour wait is required between successive coats.

The thickness of the coat applied depends largely on the condition of the brickwork surface. If the surface is

particularly uneven then the Medium grade is the product of choice for you. It is workable at thicknesses of approximately 4 mm. However if the surface is in good order only a skim coat is needed. Here the Fine grade can be applied at coating thicknesses as low as 1-2 mm.

Again the surface finish of your choice is available from the Unitex Applied Finish range, combined with the protection of UNI-PTC or UNI-FLEX MEMBRANE.

Other Unitex Renders

POLYMER RENDER (Fibro render)

It is often used as a key coat over difficult surfaces, especially FRC sheeting, for other Unitex systems. This wet product comes in 15 litre pails. This is a highly flexible polymer-modified, thickened acrylic-based render, specifically formulated to apply over FRC sheet and to the Uni-Mesh IM 250 in the Uni-TWS system. (Refer to the Uni-TWS brochure for further details).

POLYMER RENDER can also be used in other applications where a ready-to-use patching, levelling or filling render is required. Due to its inherent flexibility it can absorb minor shrinkage of the substrate, thus reducing surface cracking. Of course proper control joints are still required to be determined and installed by the builder or head contractor to compensate for soil or significant substrate movements.

Before using POLYMER RENDER approximately 5-10% by weight of cement powder is added. This will provide a faster setting time and thus quicker rain proofing. The amount of cement to be added depends on the prevailing weather conditions and the substrate environment. The cement added should be drill mixed immediately prior to application.

POLYMER RENDER can be used internally as well as externally. It is compatible with tiles, hard plaster or paint systems. This product is our strongest adhering render and it is sometimes used as an adhesive. The product must be trialled on a test area first to confirm compatibility.

PANEL PATCH™ (4-hour fire rating)

This base render product from Unitex is especially designed for those applications requiring high thermal resistance, such as rendering over steel joining plates on tilt-up pre-cast concrete panels. It is again a polymer-modified render that has been formulated with a proven heat-resistant additive.

PANEL PATCH has a 4-hour Fire Rating! Testing has been independently determined and carried out to the Australian Standard AS1530.4-1997. A copy of the test report is available from Unitex. The 4-hour Fire Rating means that PANEL PATCH can be used in multi-storey buildings where a 4-hour Fire Rating (or a less stringent requirement) is mandatory.

PANEL SKIM™

This product is an in-situ, trowel applied repair mortar. It is formulated for skim coating over, and/or repair of, concrete surfaces. For example, it is used to repair hairline cracks in concrete panels or columns. Before applying PANEL SKIM, the cleaned surface must first be primed with one coat of Unitex CEMBOND applied with a lambswool roller. Then wait 24-hours before applying the PANEL SKIM.

Approximately 3 litres of water per bag of PANEL SKIM dry powder will provide a smooth mortar consistency. The powder is slowly added to the water with drill mixing.



Unitex Surface Applied Finishes

General Information

The range of Applied Finishes from Unitex will satisfy the most discerning specifier and delight the most fashion-conscious homeowner. The choice of lightfast colours is extensive. If you are renovating or refurbishing and can provide us with a clean colour sample chip from the existing finish or, for a new project, you can show us the colour chart code you want - then we can match your requirement[†].

The majority of our Finishes are ready-to-use, water-based products supplied in 15 litre pails. They contain quality graded fine mineral components and aggregates, together with non-absorbent extenders bound by a well-proven acrylic co-polymer. This combination of ingredients results in a tough, flexible finish with excellent adhesion to both good and difficult substrates. A high impact-resistant coating results from the strong binding power.

The formulations are low-tack meaning that dirt pick-up is minimal. These products are also designed to be sacrificial with weathering effects, keeping the coating appearance like new for years to come.

The application possibilities are wide-ranging, from exterior to interior walls and ceilings, balustrades, beams, columns and in-fill panels as well as entrances and lobbies. Unitex Finishes are suitable for use over Unitex prepared plaster, brick, cement blocks, FRC sheets, aerated concrete and renders.

The Unitex Finishes range provides a minimum protective and service life of 10 years, depending on the coating thickness.

We can even provide dry powder (100% active) finish products – UNITEX 804, 809, 846 and 855. These products when applied give the same high quality, durable surface as their water-based counterparts. In this case you simply add the water, with drill mixing, immediately prior to application and then apply as for the ready-to-use products.

The feel of the surface you want is covered by our wide range of texture types, from fine-grained trowel-on surfaces to the coarser, heavy-texture roll-on finishes. If unsure of the feel you want we have free coated-samples for you to take away and compare at your leisure.

These surface coatings are both fire-resistant (tested to the Australian Standard AS1530.3) and waterproof (tested to the standard ASTM E514-90). They have good water vapour permeability which allows migration of water vapour (caused by condensation) from the substrate, whilst still maintaining a waterproof barrier to rain penetration.

The water-based grades incorporate bacteriacides and fungicides in the recipes. These provide in-can preservation to prevent microbiological spoiling of the products.

Apart from the powder-based products, all of the Unitex Finish grades are pigmented during the manufacturing process. This means that the colour is completely integrated through the entire film thickness. Thus the coating exhibits excellent colour retention and durability.

The range is available in a broad spectrum of colours, from full colour hues to pastel shades.

Note:

Some deep tones cannot be supplied in applied finishes. Talk to your Unitex representative for your specific solution.

Condition of Substrate

Any crumbling, loose or damaged substrate render must be removed and the surface patched and made good prior to coating. All surfaces must be free of grease, oils, dirt and dust. Pre-painted surfaces must have flaking paint wire-brushed back to a sound substrate. Unitex recommends a base coat of a pigmented substrate sealer (2 coats) over old renders prior to application of the surface finishes.

Packaging

The ready-to-use water based Unitex Finish products are all supplied in 15 litre pails. Each pail has a label with the unique code identifying the particular texture type, colour and batch number. This coding ensures that if you require additional product (say to finish off a job), Unitex can easily match the texture and colour to the original.

The pails have a strong sealed lid to prevent spillage if they should tip over before opening. Even after opening

[†] A small number of ultra bright or ultra dark colours can not be satisfactorily matched.

the lid still fits tightly enough when re-sealing to prevent contamination of the remaining product. The pails are packed 32 to a pallet.

The powder-based products are supplied in multi-walled paper sacks stored 60 bags to a pallet.

Coating over Unitex Renders

A minimum of 72 hours is required for through dry (and cure) of the render before applying the Unitex Finish coat. The substrate must be clean (refer page 5) before applying the Finish coat. If multi coats are desired then a minimum of 72-hours between each coat is required.

UNI-ROLL DÉCOR™

As the name implies, the products in this range of the Unitex Finishes are applied by roller. They can also be spray applied to give a smoother finish or to reduce the application time on larger jobs.

Because of the heavier texture provided by roll-on coatings, these products are ideal for application over irregular or roughly finished surfaces. They also provide for excellent hiding of shrinkage cracks with just one coat. Typical coverage is 16-18m² per pail for fine grain and 8-10m² per pail for heavy texture. Of course coverage rates vary with the surface condition.

There are two grades of UNI-ROLL DÉCOR. Unitex 109 is a medium-coarse grade, whilst the heavy-coarse grade is Unitex 110. Both provide the same ease of application and have the same colour range capabilities. Different roller sleeves can also help provide different effects.

UNI-TROWEL DÉCOR™

Again as the name implies, this range of Unitex Finishes is designed for trowel application. The products in the UNI-TROWEL DÉCOR range can be applied as a single coat or, for a high build, with two or more coats.

The 'flatness' of the surface finish, achieved with UNI-TROWEL DÉCOR products means that it is able to withstand hard knocks. This makes these products ideal for heavy-traffic areas including stairwells and exposed wall areas.

There are five grades of UNI-TROWEL DÉCOR Finishes. In order, from coarsest to finest, they are Unitex 104, 165, 107, 155 and 146. Coverage rates vary considerably with the surface condition and absorption effect. Typical coverage rates are 8-10m² per pail.

UNI-COTE™ (Dry Powders)

These unique powder finishes are dry powder-based products. They are a cement-based blend of fine marble, quality-graded mineral and polymeric additives to provide a 100% active product. On-site, all that has to be added is water to provide a ready-to-apply finish.

The amount of water to be added depends on the surface and environmental conditions at the time of application. The degree of slump required governs how much water is added.

Unitex recommend that an amount of water, equal to approximately 25% of the volume of the products being used, be added to a suitable container. The products are then added slowly with drill mixing to the water until the desired slump (consistency) is achieved.

After preparation of the wet ready-to-use mixture, the products have the same characteristics as the UNI-TROWEL DÉCOR range of finishes. (Refer page 6).

The UNI-COTE DRY POWDER FINISHES are not pigmented products. They dry on the surface to a 'cement-off-white' colour. The desired topcoat colour is achieved by application of a pigmented protective membrane such as UNI-PTC for a matt surface effect or UNI-FLEX MEMBRANE for a satin surface finish.



Unitex Protective Membranes

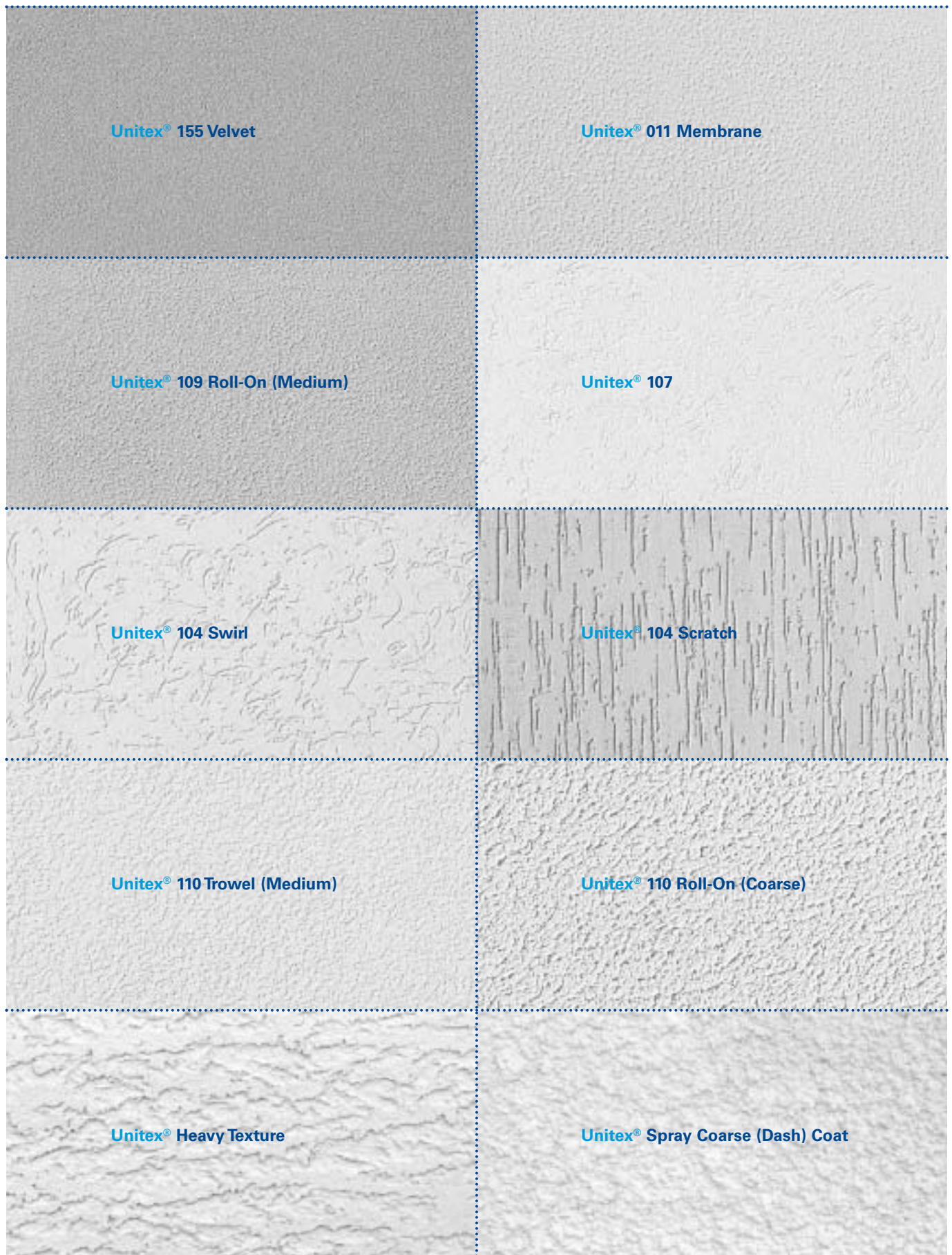
These highly flexible protective topcoats are designed to provide a pigmented sealer. Two coats are required which not only protect the surface from aggressive environments but also enhance the beauty of the finished construction. The Protective Membrane can be painted over the decorative Uni-Shape® Mouldings (refer to the Unitex Mouldings brochure) so that the same colour continues over the entire wall.

There are two grades in the Protective Membrane category of Unitex Renders & Finishes. They are UNI-PTC™ and UNI-FLEX MEMBRANE™. The former provides a matt surface finish effect whilst the UNI-FLEX MEMBRANE leaves a satin surface effect.

In other respects the two products are similar. They both have excellent durability due to the very high flexibility built into the products. They are based around acrylic co-polymer dispersion binders combined with synthetic extender and surface additives and very fine graded quality fillers.

Unitex Finishes Swatches

These swatches have been matched with the range of Unitex Finishes available. The performance of Unitex Renders and Finishes is equalled by the Unitex production team's ability to bring your dream to life. Simply provide a colour chart or paint chip and Unitex will match the finishes below to the colour of your choice*. Other coarser and finer textures can be made to order for project clients.



* A small number of ultra bright or ultra dark colours can not be satisfactorily matched.

Unitex Renders & Finishes Product Selection Table

Substrate	Finish	Preparation	Base Coat	Texture	Top Coat	Comments
New Brick &/or Old Brick Seconds Cement Block	Fine	Remove dust, building debris, grime and laitance with a thorough water wash down, scrubbing where necessary	HiLITE RENDER or REDI RENDER followed by a skim coat of FINE REDI RENDER	Unitex 146 [§] , 155, 855 or Unitex 109	UNI-PTC or UNI-FLEX MEMBRANE coloured to match	Unitex 146 [§] , 155, 104, 107 and Uni-Marble Grain are Trowel applied. 109 and 110 are Roller Applied. '800 series' are supplied in powder form - just add water.
	Coarse		HiLITE RENDER or REDI RENDER	Unitex 104, 107, 110, 165, 804, Uni-Marble Grain		
Bagged &/or Painted Brick Painted Concrete Glazed Brick	Fine	Remove all loose paint (bagging material) with wire brush or water blast. Then clean as above	POLYMER RENDER* followed by HiLITE RENDER, if required for build	Unitex 146 [§] , 155 or Unitex 109	UNI-PTC or UNI-FLEX MEMBRANE coloured to match	Use the cross-hatch test procedure to confirm adequate removal of loose paint before applying any base render.
	Coarse		POLYMER RENDER* followed by HiLITE RENDER	Unitex 104, 110, 165 or Unitex 109		
AAC Porous Block or Panel	Fine	Remove dust, building debris, grime and laitance with a thorough water wash down. Leave to dry. Seal with CEMBOND (Acrylic Sealer)	HiLITE RENDER	Unitex 146 [§] , 155, 855 or Unitex 109	UNI-PTC or UNI-FLEX MEMBRANE coloured to match	Confirm application approval from the substrate manufacturer before starting out
	Coarse			Unitex 104, 107, 110, 165, 804, Uni-Marble Grain		
In-situ Concrete	Fine	Remove dust, building debris, grime and laitance with a thorough water wash down, scrubbing where necessary	POLYMER RENDER* for smooth non-porous surfaces or HiLITE RENDER for rough, air-holed surfaces	Unitex 146 [§] , 155, 855 or Unitex 109	UNI-PTC or UNI-FLEX MEMBRANE coloured to match	For a high build (>10mm) use POLYMER RENDER* as the primary base coat followed by HiLITE RENDER to give the desired thickness
	Coarse			Unitex 104, 107, 110, 804, Uni-Marble Grain		
Pre-cast Panel	Fine	Remove all form oils/bond breakers. Clean as above then patch holes with PANEL PATCH	CEMBOND Substrate Sealer	Unitex 146 [§] , 155, 855 or Unitex 109	UNI-PTC or UNI-FLEX MEMBRANE coloured to match	Do not texture over expansion joints/mastics
	Coarse			Unitex 104, 107, 110, 804, Uni-Marble Grain		
Fibrous-cement Sheeting	Fine	Clean as above then apply UNI-MESH 50mm width, followed by POLYMER RENDER* over the butt joints. Leave all builder expansion joints open	POLYMER RENDER*	Unitex 146 [§] , 155, 855 or Unitex 109	UNI-PTC or UNI-FLEX MEMBRANE coloured to match	Expansion joints to be set by the builder/engineer. Unitex recommend minimum every 6-8 m and between levels.
	Coarse			Unitex 104, 107, 110, 804, Uni-Marble Grain		
Insulation Board (foam sheet)	Fine/Coarse	Refer Uni-TWS Brochure for details				Uni-IB Board comes in 50, 75 and 100 mm thicknesses
Weatherboard	Fine/Coarse	Remove boards and then treat as per Uni-TWS				
Plasterboard (Internal)	Fine/Coarse	Dry brush clean	CEMBOND Substrate Sealer			This substrate is designed for internal use only
Textured Wall (sound)	Fine/Coarse	Scrub with clean water	POLYMER RENDER* and if required followed by HiLITE RENDER	Unitex 146 [§] , 155, 855 or Unitex 109	UNI-PTC or UNI-FLEX MEMBRANE coloured to match	
Rendered Wall (sand/cement)	Fine/Coarse	Wash down with clean water	Pigmented Substrate Sealer (2 coats)	Uni-Marble Grain		
Tiled (Sound)		Wash down and clean with hot soapy water	POLYMER RENDER*			

* POLYMER RENDER (FIBRO RENDER) always with 5-10% cement added homogeneously. § Recommended for professional use only on perfect substrates.

Specifier's Clause:

Unitex Renders & Finishes shall be spray, trowel, roller or brush applied to the required thickness with one or two coats as specified. The specified base-coat render over the <insert description here> surface shall be <insert product name here> as manufactured by Unitex and applied to Unitex specifications. They are manufactured by Unitex® Granular Marble.

Contact by phone: (03) 9768 4900 (Melbourne), (02) 9648 5878 (Sydney) or visit: www.unitex.com.au

The information contained in this document is based on data available at the time of writing, which we believe is accurate and reliable. Unitex reserves the right to change the information without prior notice.

Unitex
22 Park Drive, Dandenong,
Victoria, 3175 Australia
Telephone: (61 3) 9768 4900
Facsimile: (61 3) 9768 4999

State Franchises
SA Ph: (08) 8262 7900
WA Ph: (08) 9248 8788
Branches
NSW/QLDPh: (02) 9648 5878

AVAILABLE FROM: